

Multi-professional support model for funding applications

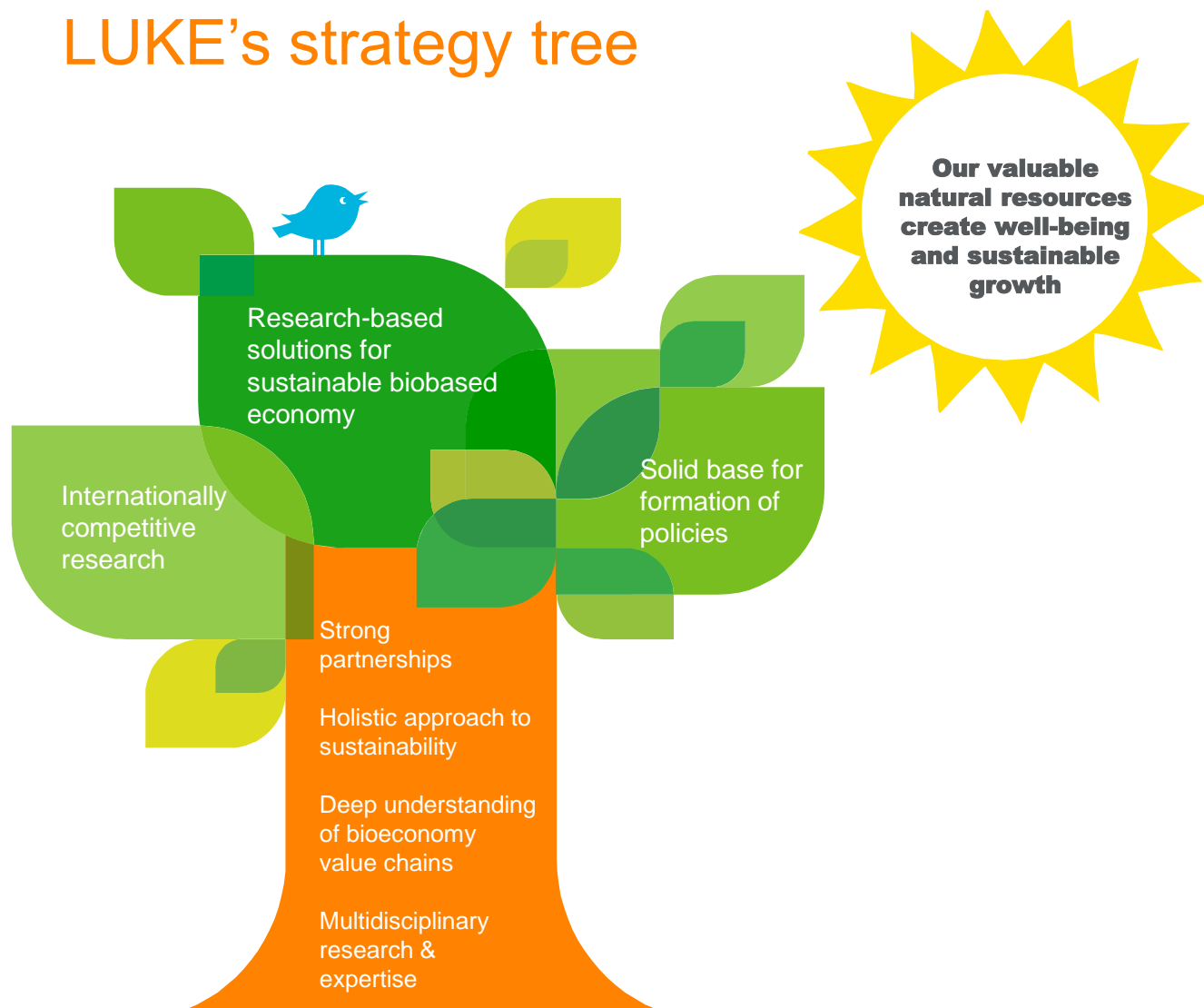
Dr. Laura Kitti

ICN2 workshop, Barcelona 4-5 October 2018

Luke in a nutshell

- Natural Resources Institute Finland (Luke) was established in 2015.
- Luke is a research and expert organization with expertise in renewable natural resources and sustainable food production.
- Luke supports sustainable development through research on forestry, agriculture, food, game and fisheries.
- Luke provides new solutions for bioeconomy and promotion of new bio-based business.
- Luke also carries out statutory government work.

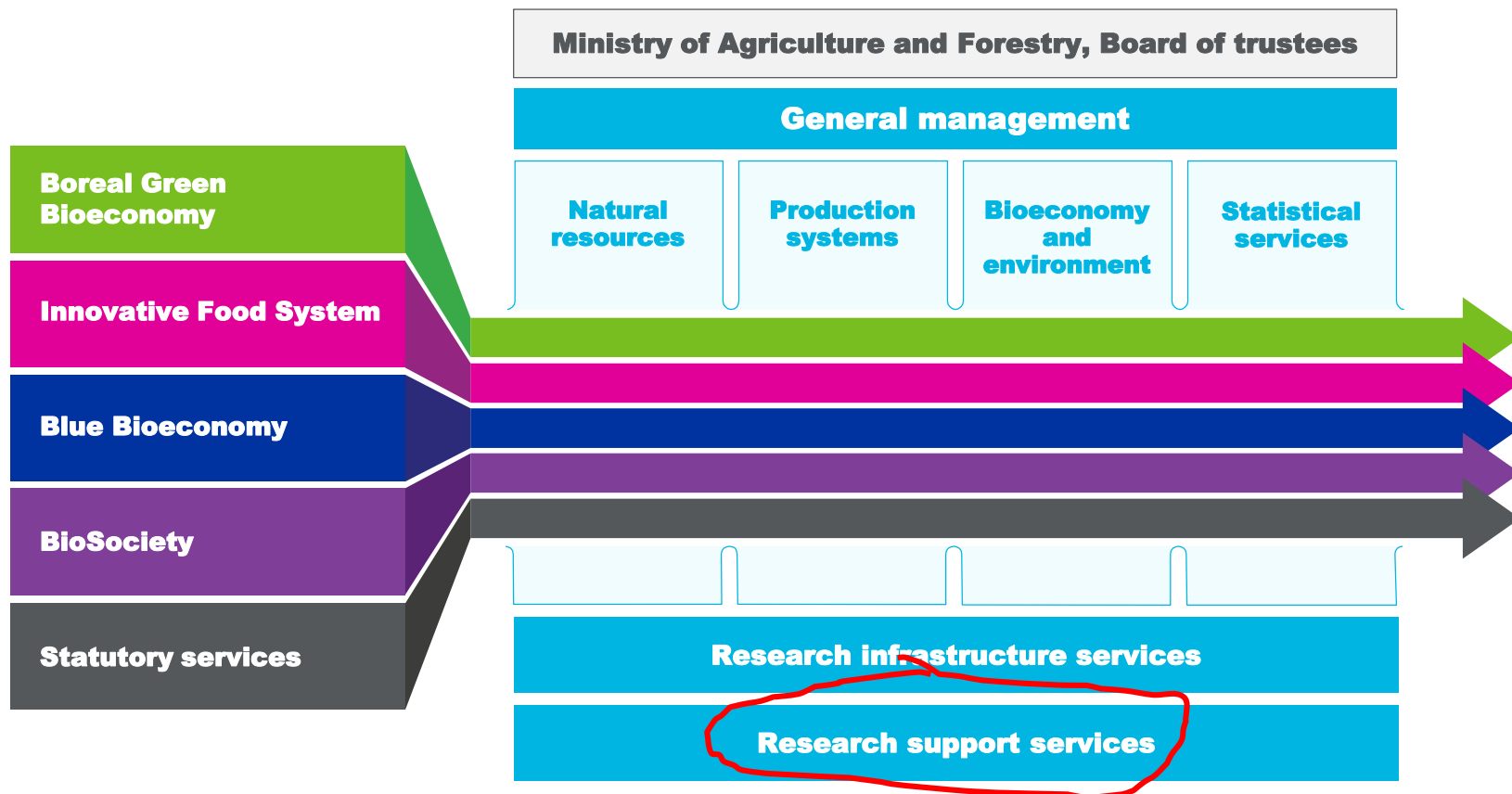
LUKE's strategy tree



Motivated and skilled staff

Unique research infrastructures and platforms

High-quality data assets and open access



120 M€

Turnover

96 M€

Research & customer portfolio

24 M€

Statutory services

25

Locations in Finland

HQ in Helsinki

Present in 12 campuses with universities, research institutes and polytechnics

1300

Employees

42 research professors
680 researchers

*We are one of the four
Statistical Authorities in Finland.*

Research support services



Project Centre

Provides support services for projects over their life cycle from funding application and financial management to communication and publishing.



Multi-professional support model is implemented in co-operation with the three teams

- Grants Office
- Financial services
- Information and publication services
- + other experts

First steps with the support model

Team contacts coordinator or
researcher contacts the team

First coaching session

Agreeing the
services needed

Nominating adm manager and
project financial expert

Scheduling the
preparation

Intensive work with Luke
support group starts

Multi-professional support model



Project implementation

- Relevant services will continue
 - Project management (Administrative manager)
 - Financial management
 - Innovation management
 - Support in publication processes
 - Dissemination and communication
 - Data management
 - Open science
 - etc.

Thank you!